

CABIN MODULE

41m²

R 868 000 ex vat

21m² ground & 7m² mezzanine

28m² module including 13m² deck



COST OF MODULE & DECK

R 657 000 ex vat

certified pile foundation
solid mass timber walls & roof
solid timber floor
solid timber or metal sheeting
insulation as per SANS requirements
metal roof & rainwater goods
5 aluminium windows & 1 aluminium doors
timber deck
certified pile foundation
architectural drawings for standard structure

LOCAL INSTALLATION

R 106 000 ex vat

soil test
engineers COC certificate for module
delivery, crane hire & transport
certified pile foundation
engineers COC certificate for module
site toilet & equipment hire
health & safety file

ADDITIONS ELECTRICAL

R 105 000 ex vat

7 light points and fittings
4 light switches
5 plug points
DB & materials
electrical COC

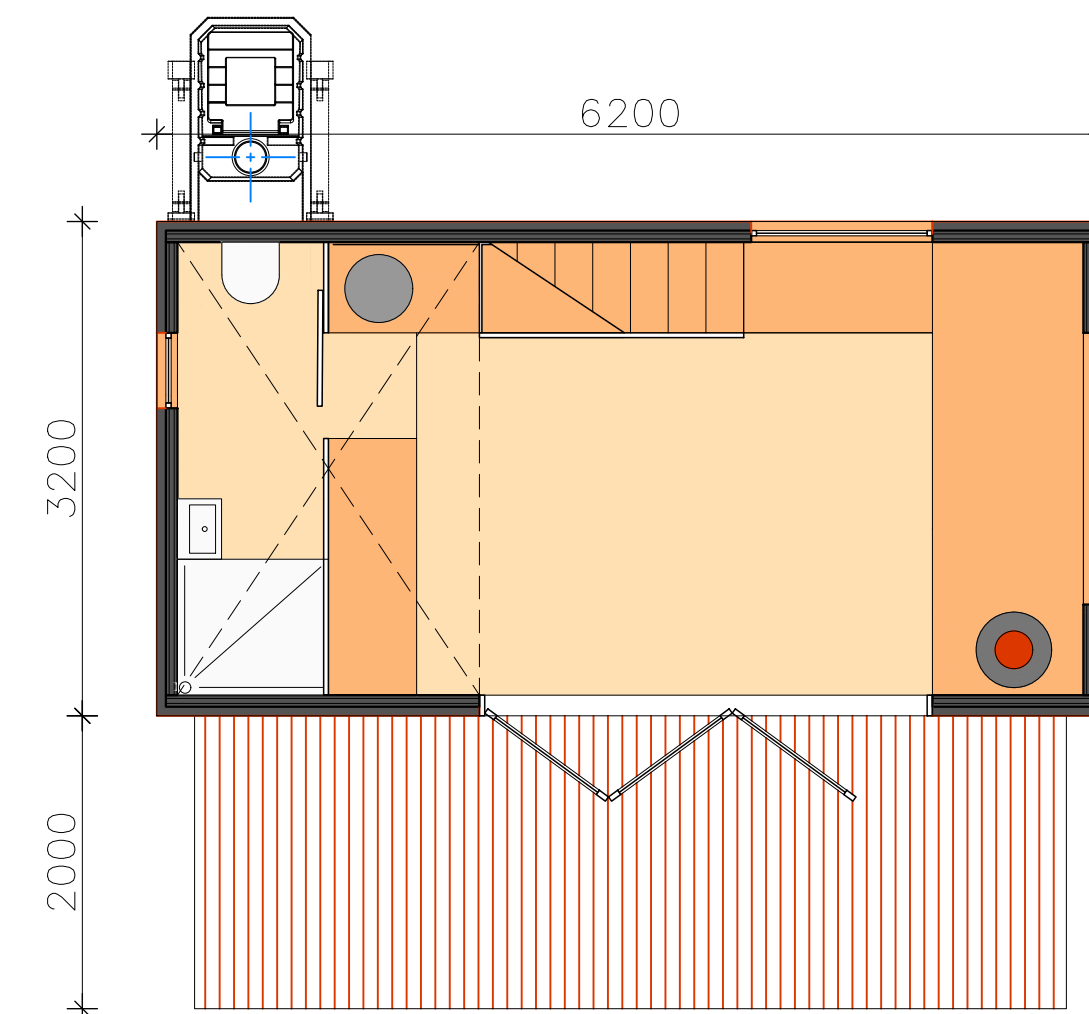
OTHER SERVICES

On Request

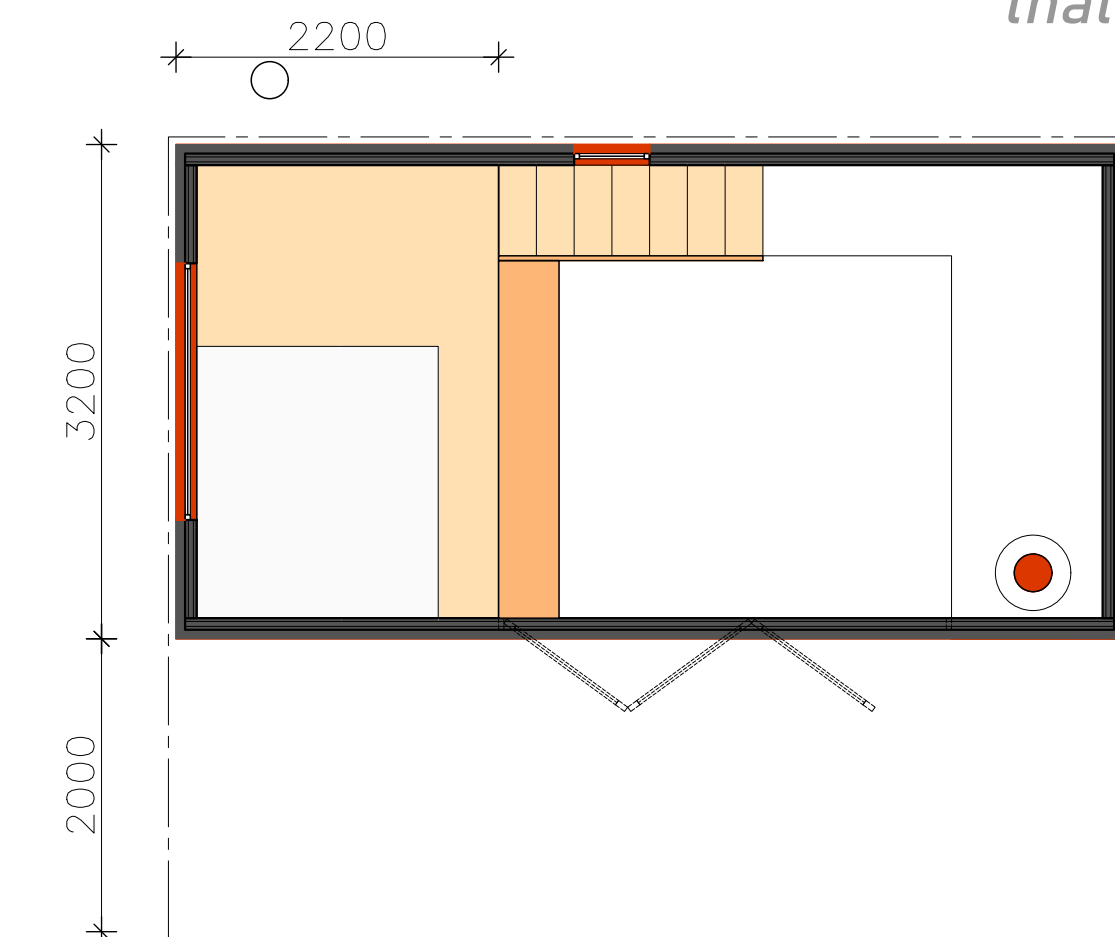
council approval
joinery
fireplace
off grid systems
waterless wc
screens & pergolas
alternative space configuration
site specific foundation system

PLUMBING

3 bathroom points
geberit WC, shower & basin
materials

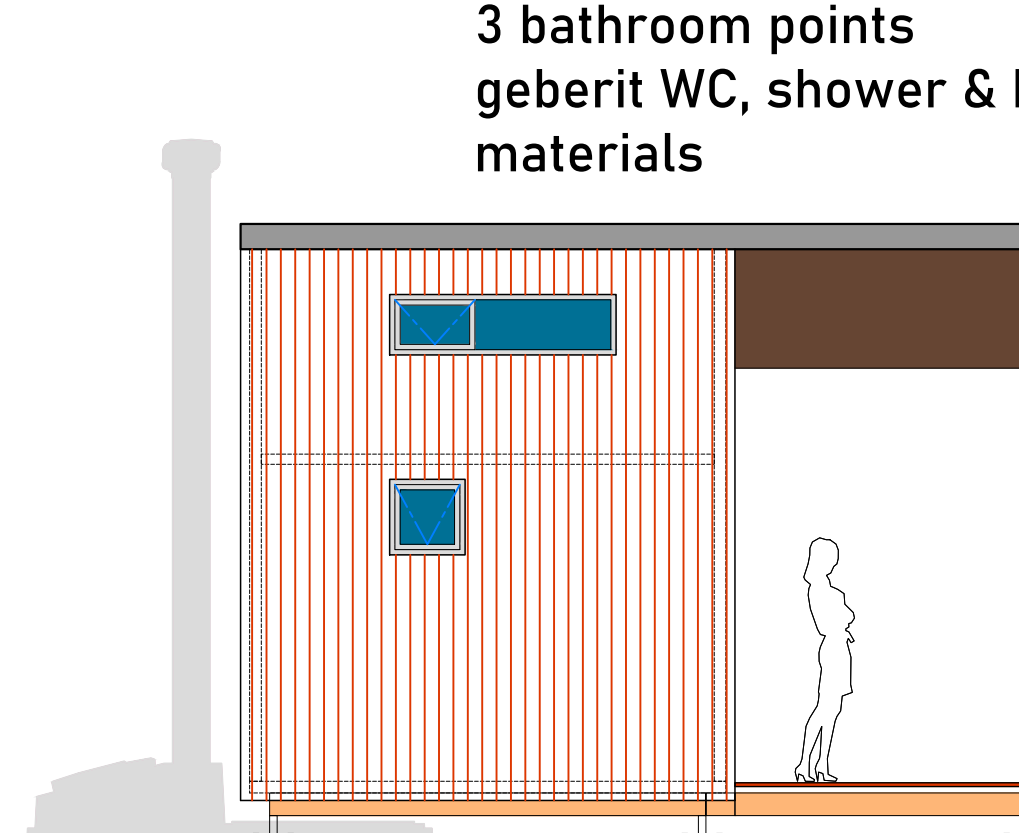


LOWER LIVING LAYOUT

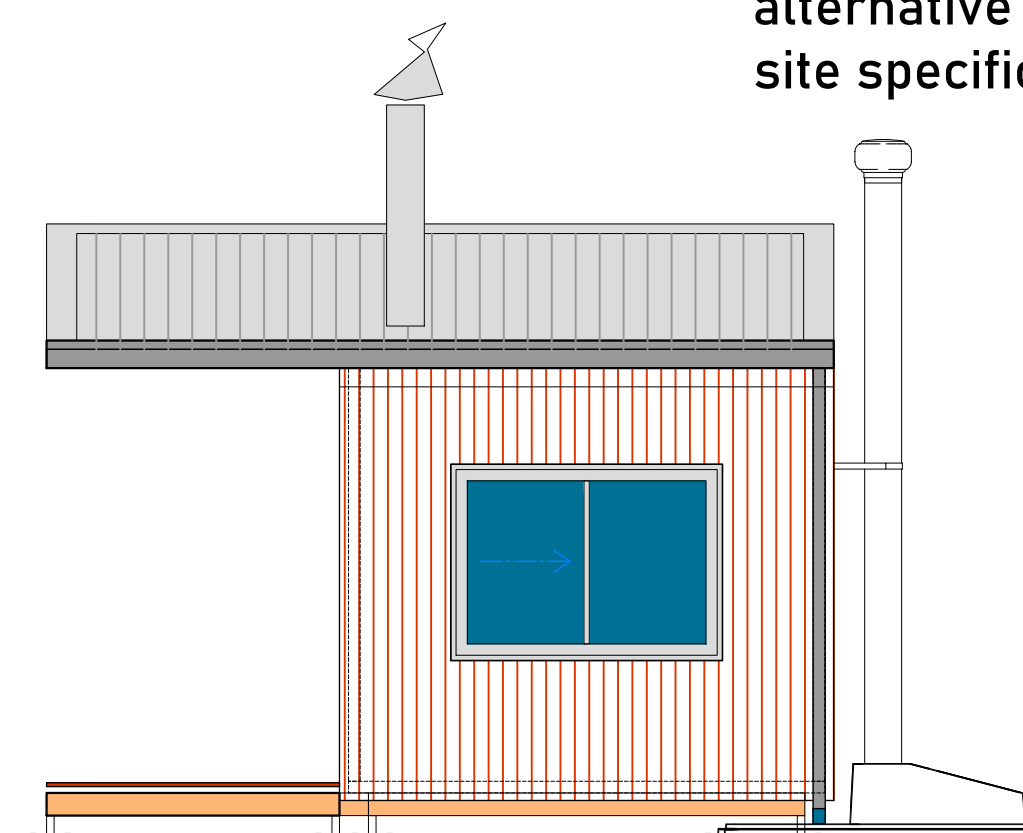


UPPER SLEEPING LAYOUT

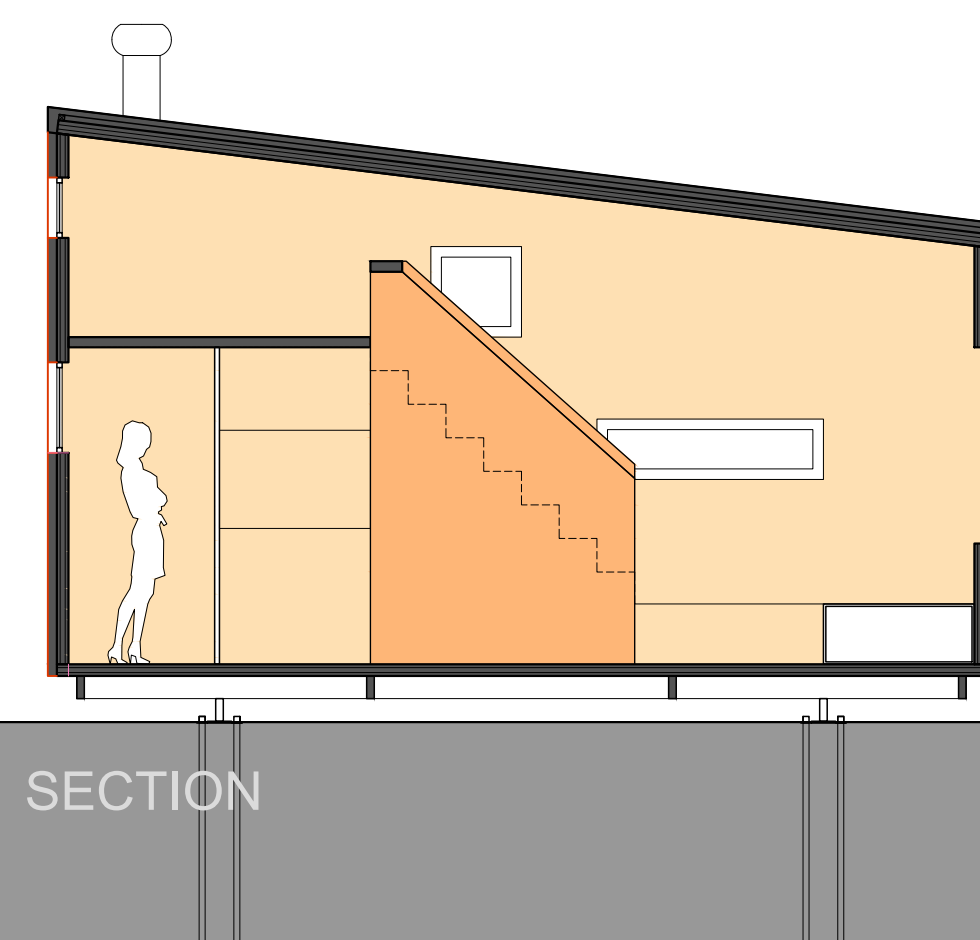
The CABIN packs space and function best yet still boasts a sense of space and volume. This smart module is the designed 'tiny home' which spreads over two levels and where function prevails, yet with a real sense of home with opportunities. The expansive roof overhang and deck allows all functions to spill out creating that perfect little home.



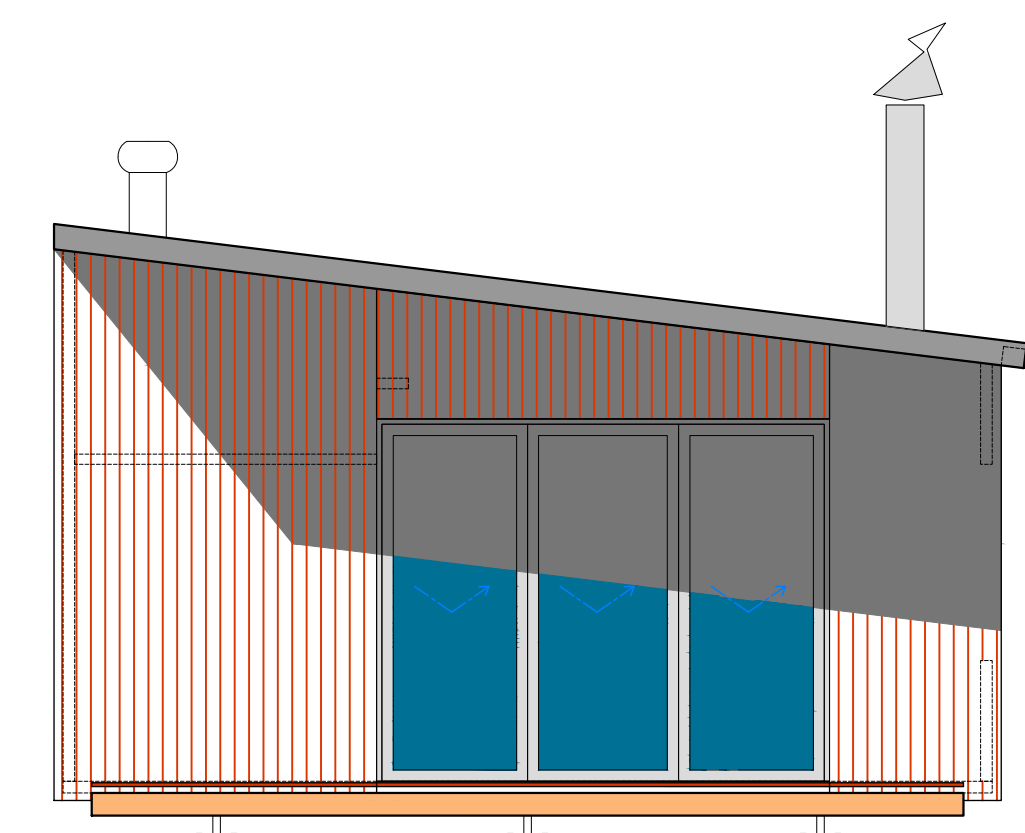
SIDE



SIDE



SECTION



FRONT

CABIN

lets connect.

frank@ikhayamodular.co.za

+27 (0)82 411 2783

www.ikhayamodular.co.za