

COAST MODULE

56m²

R 1 174 000 ex vat

39m² module including 17m²deck

COST OF MODULE & DECK

R 906 000 ex vat

certified pile foundation
solid mass timber walls & roof
solid timber floor
solid timber or metal sheeting
insulation as per SANS requirements
metal roof & rainwater goods
4 aluminium windows & 3 aluminium doors
timber deck
certified pile foundation
architectural drawings for standard structure

LOCAL INSTALLATION

R 122 000 ex vat

soil test
engineers COC certificate for module
delivery, crane hire & transport
certified pile foundation
engineers COC certificate for module
site toilet & equipment hire
health & safety file

ADDITIONS ELECTRICAL

R 146 000 ex vat

8 light points and fittings
6 light switches
6 plug points
DB & materials
electrical COC

PLUMBING

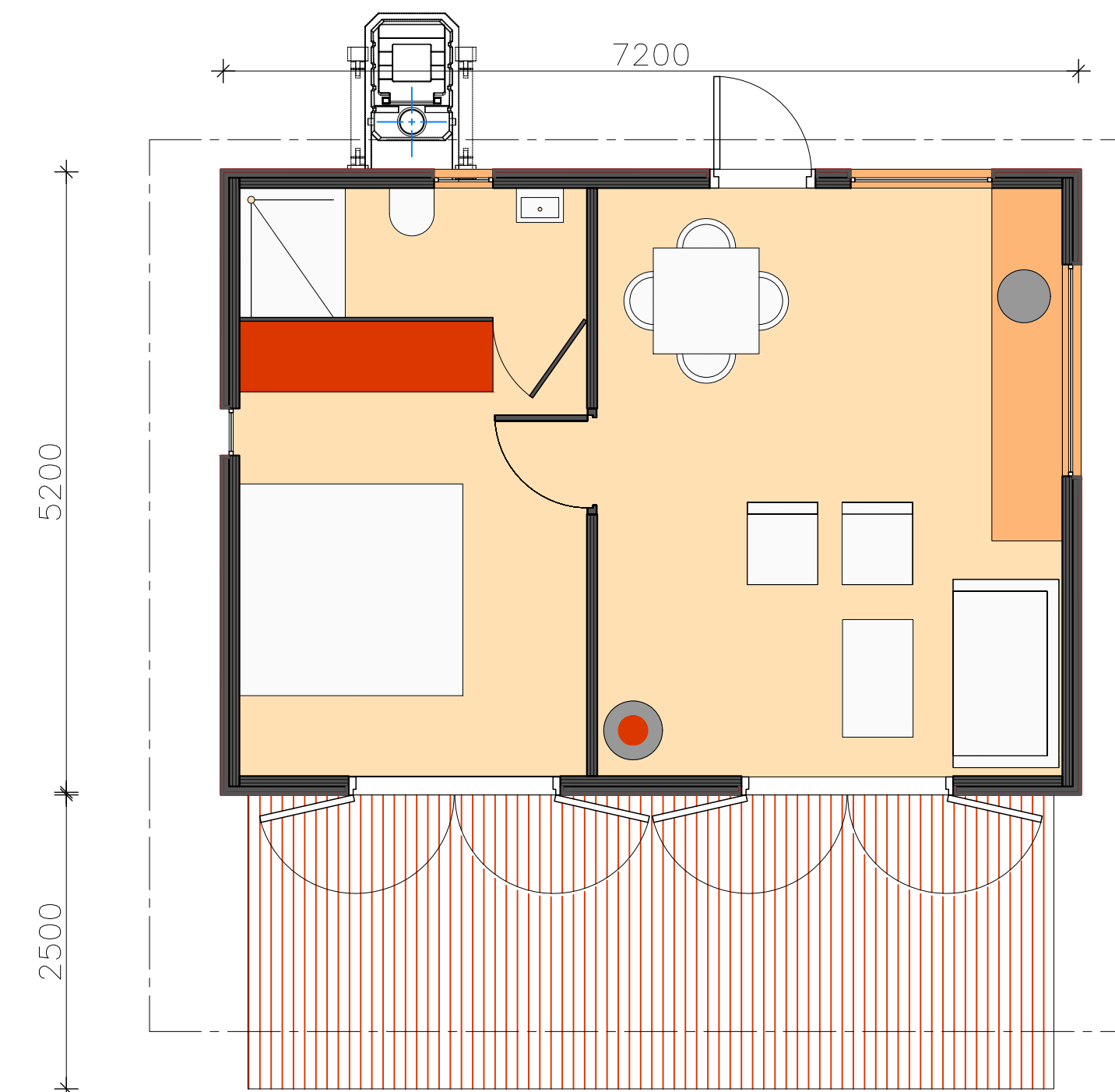
3 bathroom points
geberit WC, shower & basin
materials

OTHER SERVICES

On Request

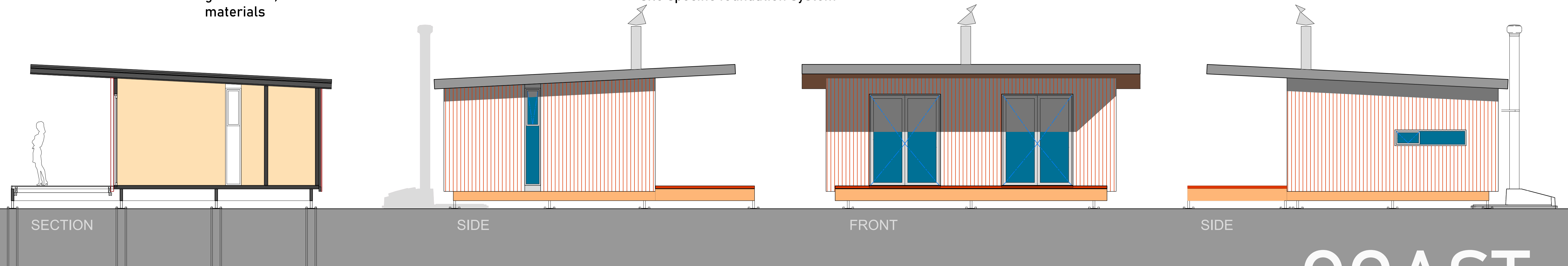
council approval
joinery
fireplace
off grid systems
waterless wc
screens & pergolas
alternative space configuration
site specific foundation system

ikhaya
modular



LAYOUT

The COAST is the one bedroom, en-suite structure with a clear sense of luxury with a mere 3 weeks installation period with our unique certifiable foundation system. This an ideal guest cottage, air b'nb, home of place of business. With its expansive exterior deck and extended roof-overhang this solution promotes the possibilities of the seamless inside outside lifestyle.



COAST

lets connect.

frank@ikhayamodular.co.za

+27 (0)82 411 2783

www.ikhayamodular.co.za