

MOUNTAIN MODULE

42m²

R 870 000 ex vat

26m² module including 16m²deck



COST OF MODULE & DECK

R 673 000 ex vat

certified pile foundation
solid mass timber walls & roof
solid timber floor
solid timber or metal sheeting
insulation as per SANS requirements
metal roof & rainwater goods
3 aluminium windows & 1 aluminium doors
timber deck
certified pile foundation
architectural drawings for standard structure

OTHER SERVICES

On Request

council approval
joinery
fireplace
off grid systems
waterless wc
screens & pergolas
alternative space configuration
site specific foundation system

The MOUNTAIN is diverse structure for the minimalist and is planned to be a one bedroom destination up in the hills, tucked away spare en-suite cottage in your garden, an office or even a small primary residence. Alternatively these could be collectively clustered in a safari lodge. All our modules boast large roof overhangs for the outside deck to extend ones space and shading.

LOCAL INSTALLATION

R 105 000 ex vat

soil test
engineers COC certificate for module delivery, crane hire & transport
certified pile foundation
engineers COC certificate for module
site toilet & equipment hire
health & safety file

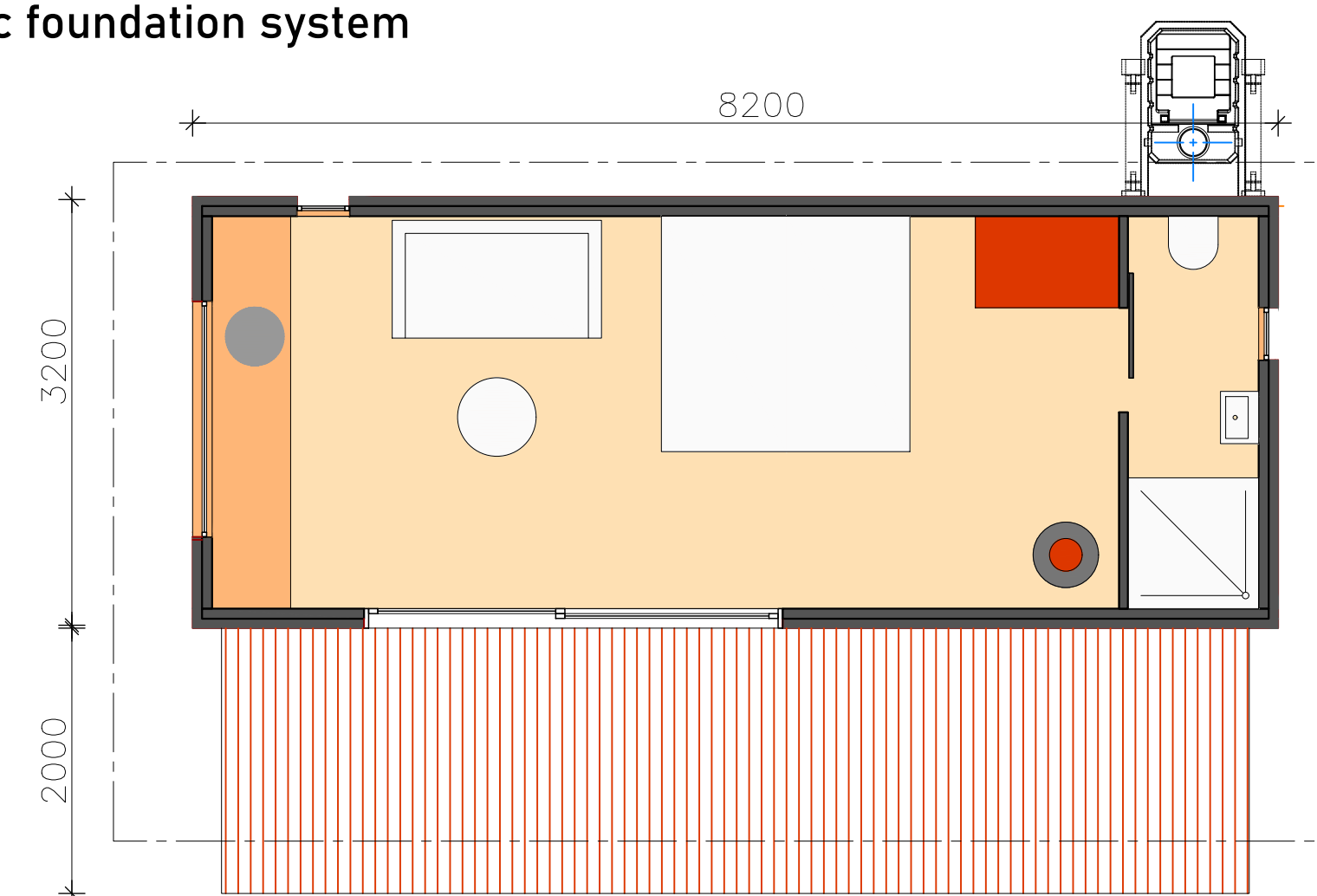
ADDITIONS ELECTRICAL

R 92 000 ex vat

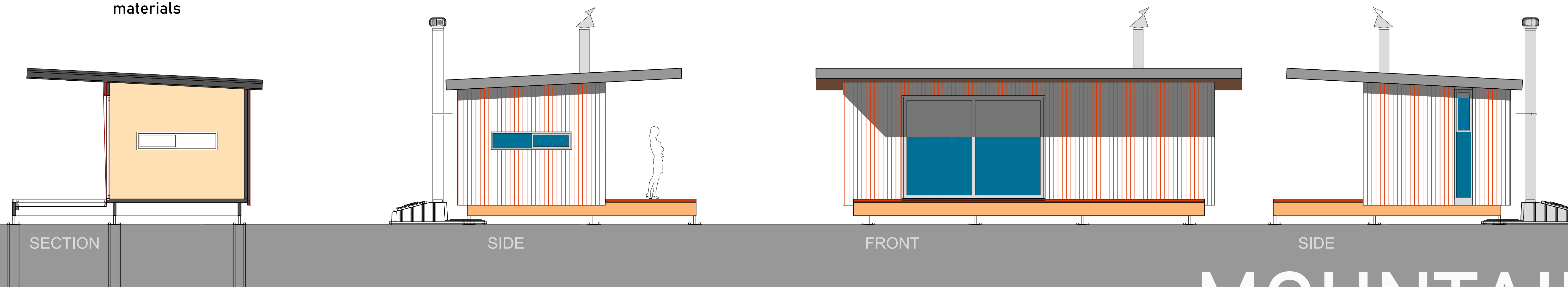
6 light points and fittings
4 light switches
5 plug points
DB & materials
electrical COC

PLUMBING

3 bathroom points
geberit WC, shower & basin
materials



LAYOUT



MOUNTAIN

lets connect.

frank@ikhayamodular.co.za

+27 (0)82 411 2783

www.ikhayamodular.co.za