

STUDIO MODULE

19m²

R 537 000 ex vat

14m² module including 5m²deck



COST OF MODULE & DECK

R 387 000 ex vat

certified pile foundation
solid mass timber walls & roof
solid timber floor
solid timber or metal sheeting
insulation as per SANS requirements
metal roof & rainwater goods
2 aluminium windows & 1 aluminium doors
timber deck
certified pile foundation
architectural drawings for standard structure

OTHER SERVICES

On Request

council approval
joinery
fireplace
off grid systems
screens & pergolas
waterless wc
alternative space configuration
site specific foundation system

The SUDIO is the ideal space as an extra en-suite garden cottage, a small company office or even a getaway abode which proves going small does not mean a compromise. The smart, compact space has endless layout possibilities and is based on the compact 'tiny living' concept. It has all that one need as a getaway destination or a office space which could seat up to 5 comfortably.

LOCAL INSTALLATION

R 71 000 ex vat

soil test
engineers COC certificate for module
delivery, crane hire & transport
certified pile foundation
engineers COC certificate for module
site toilet & equipment hire
health & safety file

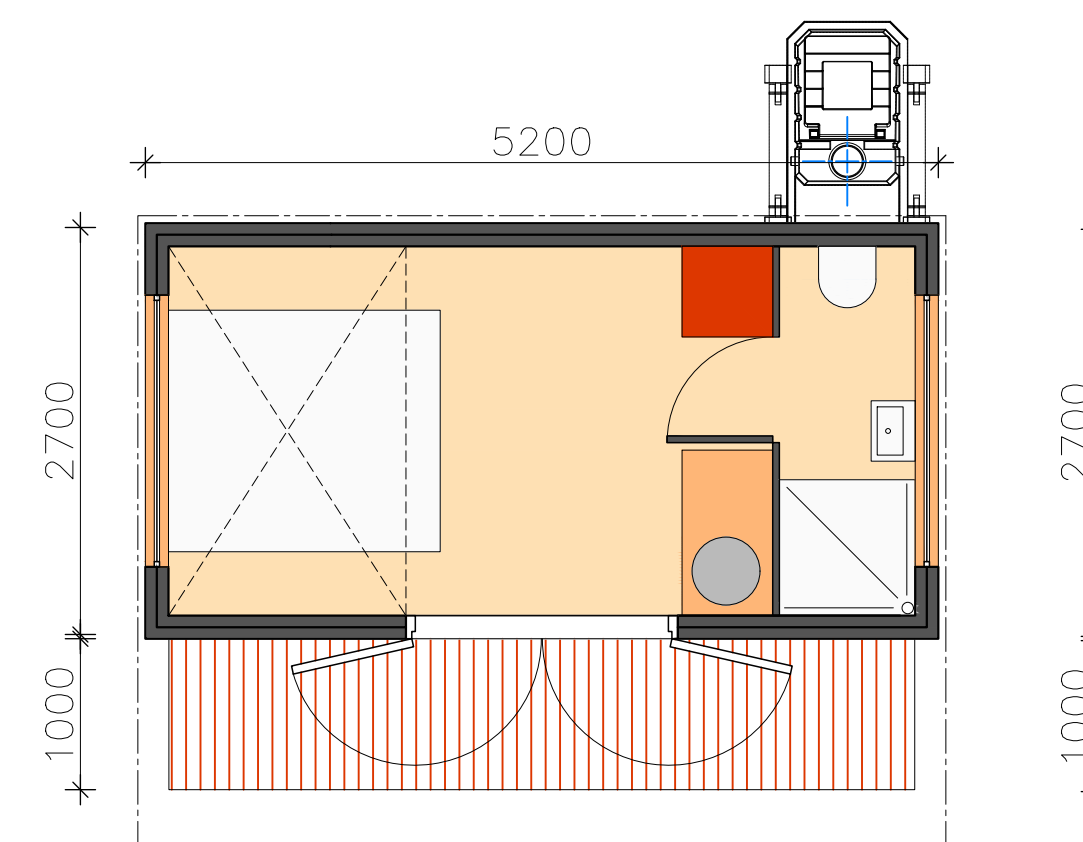
ADDITIONS ELECTRICAL

R 79 000 ex vat

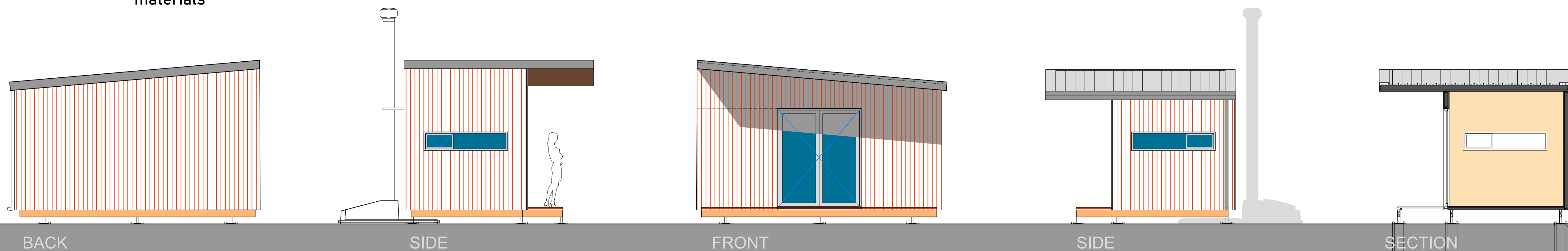
5 light points and fittings
3 switches
2 plug points
DB & materials
electrical COC

PLUMBING

3 bathroom points
geberit WC, shower & basin
materials



LAYOUT



STUDIO

lets connect.

frank@ikhayamodular.co.za

+27 (0)82 411 2783

www.ikhayamodular.co.za