

VALLEY MODULE

108m²

R 1 949 000 ex vat

78m² module including 30m²deck

COST OF MODULE & DECK

R 1 526 000 ex vat

certified pile foundation
solid mass timber walls & roof
solid timber floor
solid timber or metal sheeting
insulation as per SANS requirements
metal roof & rainwater goods
5 aluminium windows & 4 aluminium doors
timber deck
certified pile foundation
architectural drawings for standard structure

LOCAL INSTALLATION

R 172 000 ex vat

soil test
engineers COC certificate for module
delivery, crane hire & transport
certified pile foundation
engineers COC certificate for module
site toilet & equipment hire
health & safety file

ADDITIONS ELECTRICAL

R 251 000 ex vat

14 light points and fittings
7 light switches
12 plug points
DB & materials
electrical COC

PLUMBING

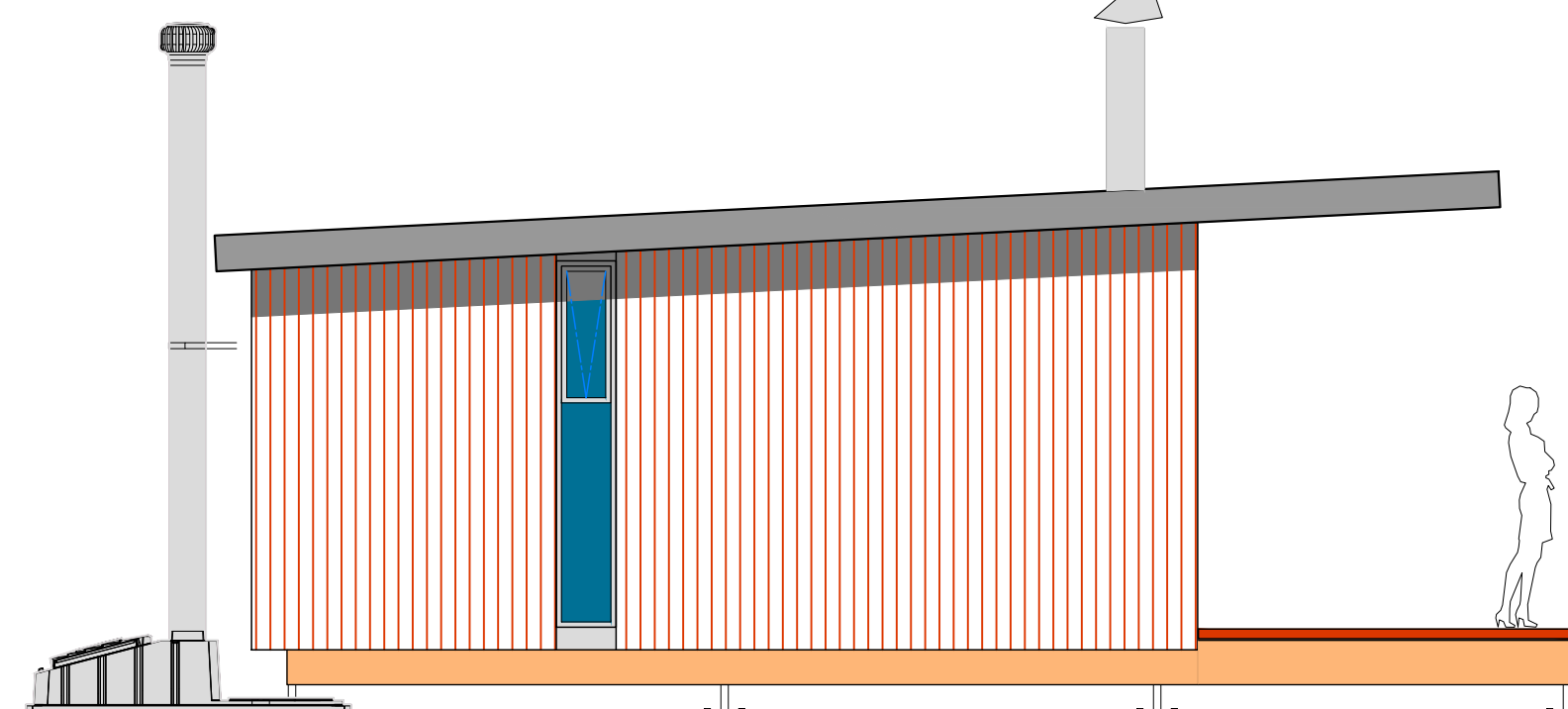
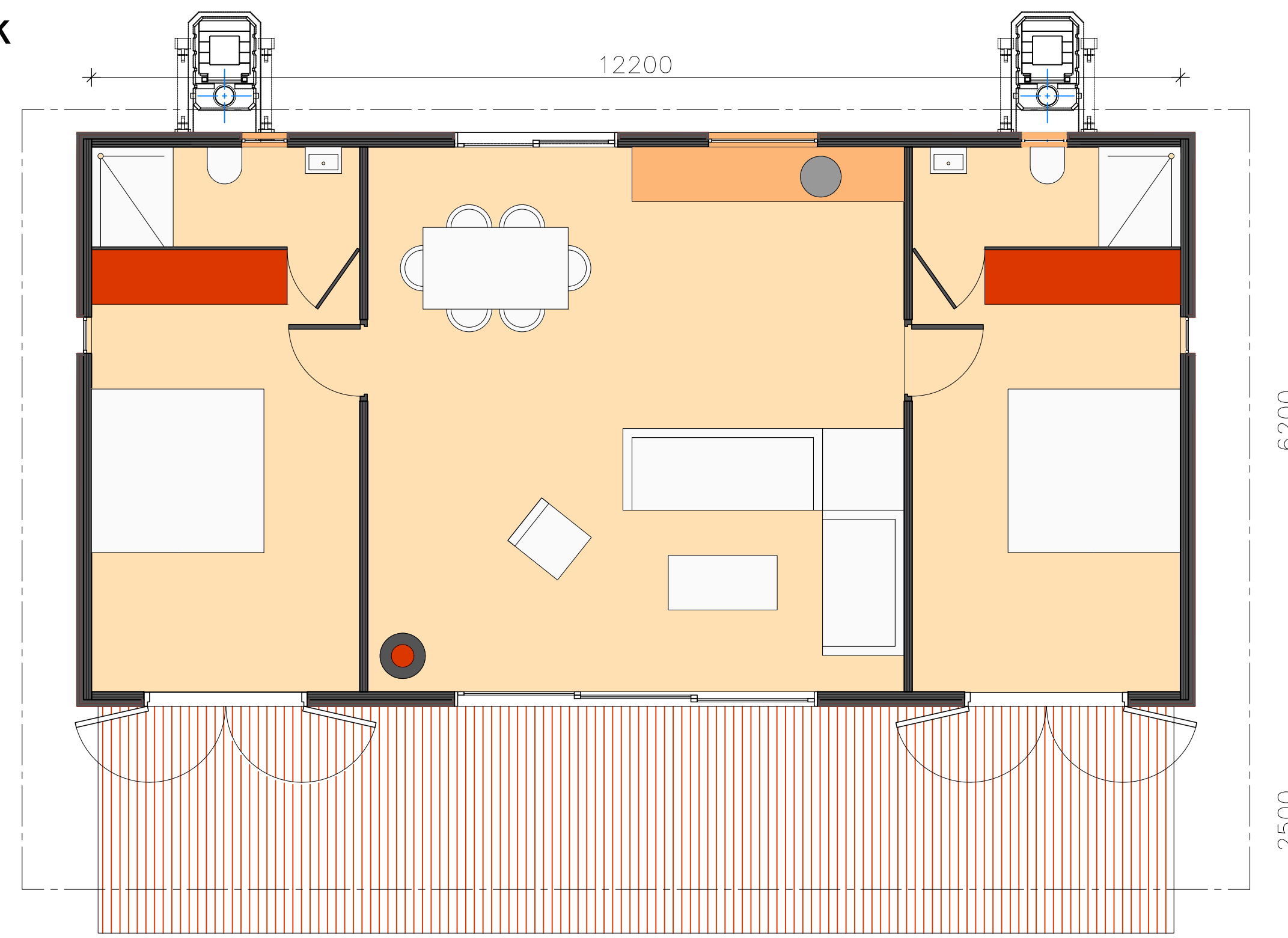
6 bathroom points
geberit WC, shower & basin
materials

OTHER SERVICES

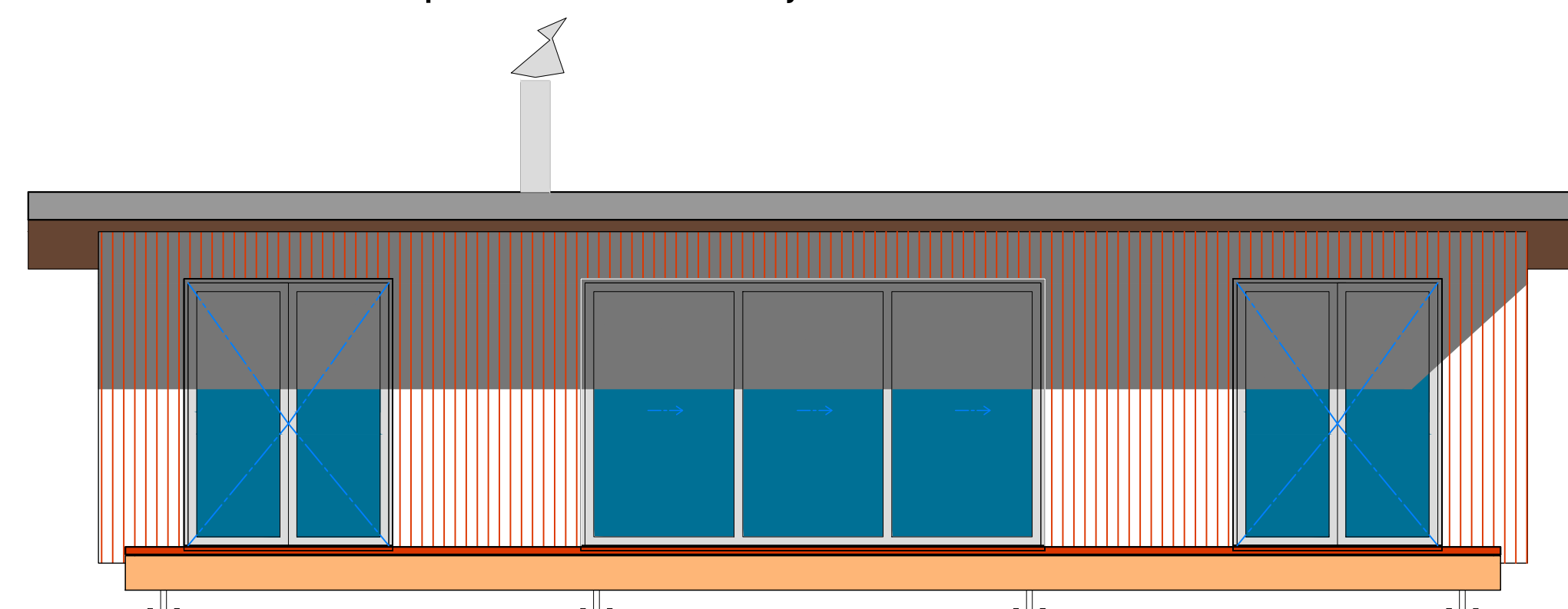
On Request

council approval
joinery
fireplace
off grid systems
waterless wc
screens & pergolas
alternative space configuration
site specific foundation system

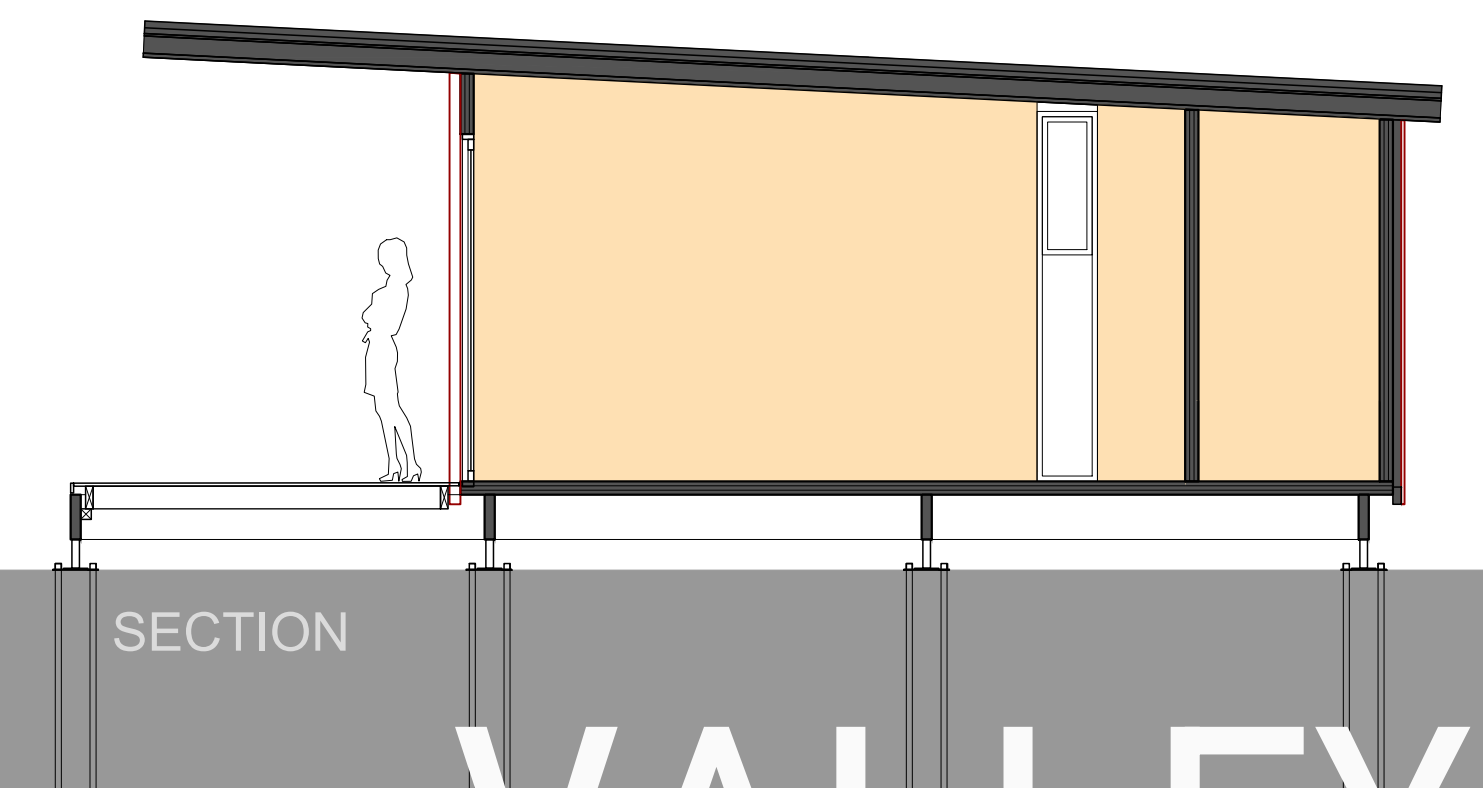
LAYOUT



SIDE



FRONT



SECTION

VALLEY

ikhaya
modular

The VALLEY is currently the largest predestined solution we offer and would comfortably sleep up to 8. Even this comfortable, solid timber, certifiable family home is installed in only 4 weeks in almost any destination and its layout possibilities are endless and could easily be considered to be a classroom or an office space.

lets connect.

frank@ikhayamodular.co.za

+27 (0)82 411 2783

www.ikhayamodular.co.za